



AV Forums

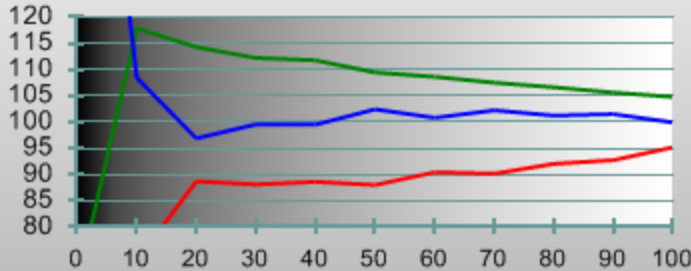
Display Type: MODE\_LCD\_DIRECT  
 Make: LG  
 Model: LH4000  
 Input: HDMI 1080p HD - AV  
 Forums\_LG\_42LH4000.cdf  
 Viewing Distance: 50 - 81

Pre-Calibration

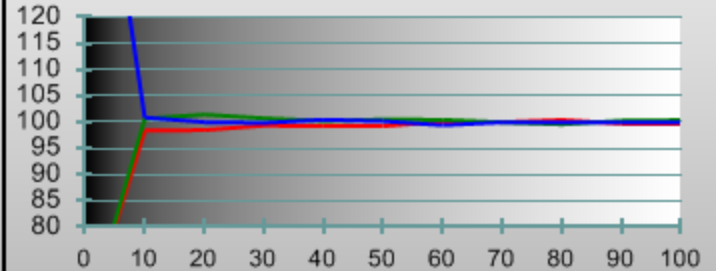
3D Grayscale/Gamut

Post-Calibration

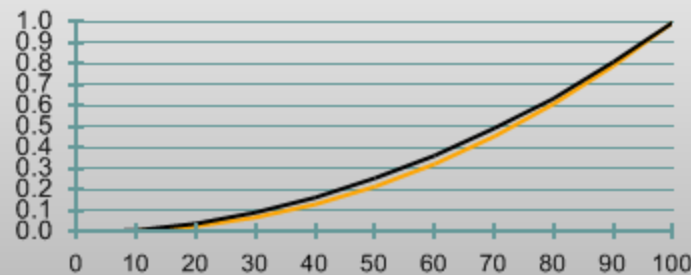
RGB Level Tracking



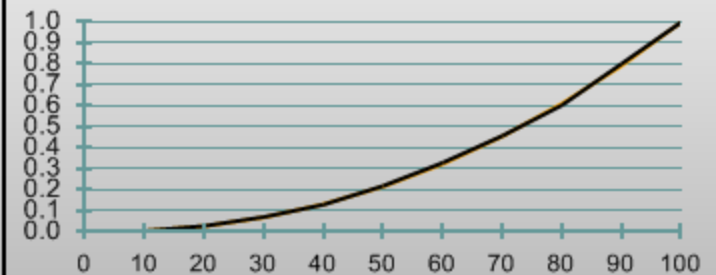
RGB Level Tracking



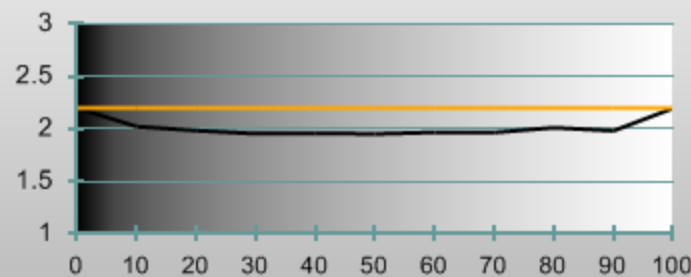
Luminance Y



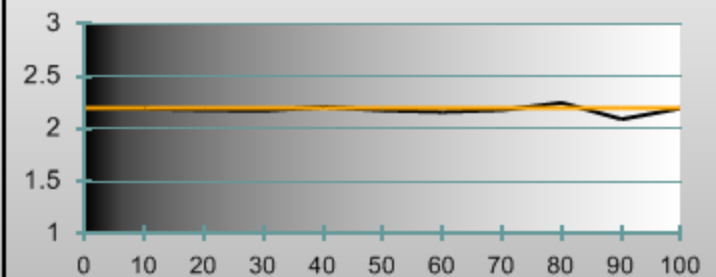
Luminance Y



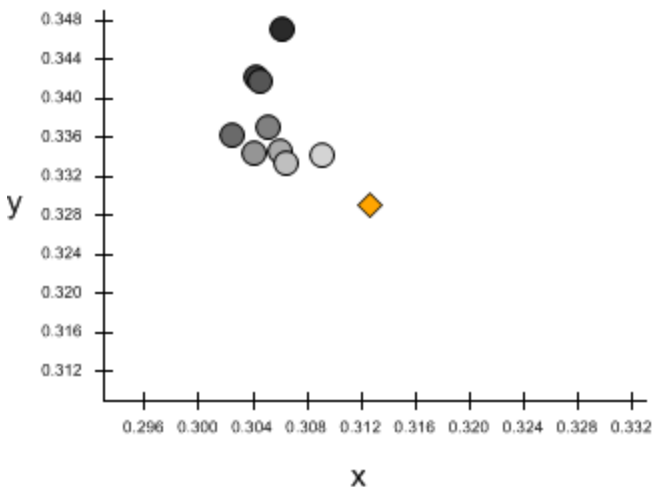
Gamma Y



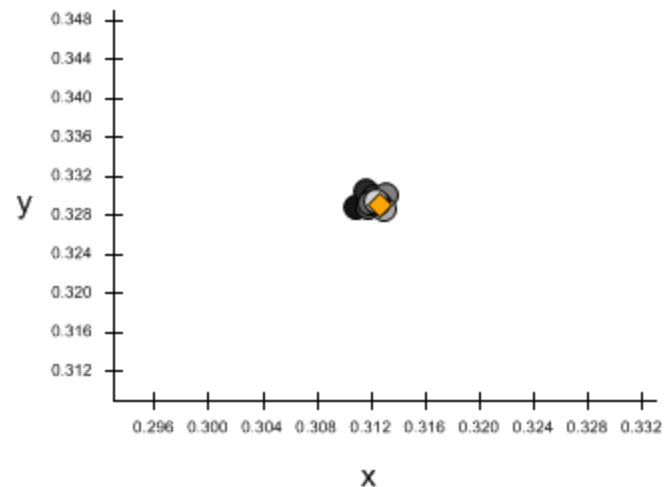
Gamma Y



Grayscale Scatter



Grayscale Scatter



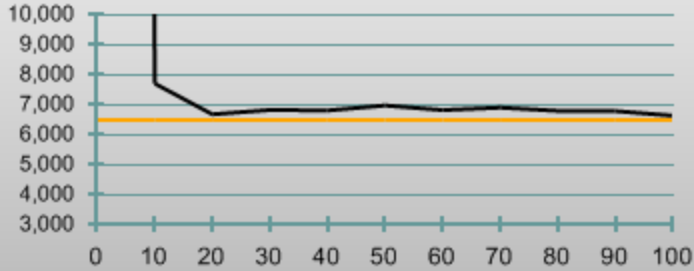


Pre-Calibration

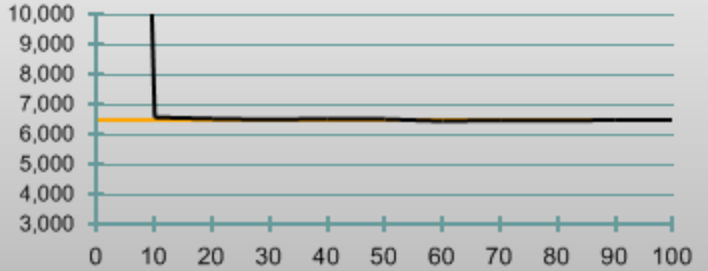
2D Grayscale

Post-Calibration

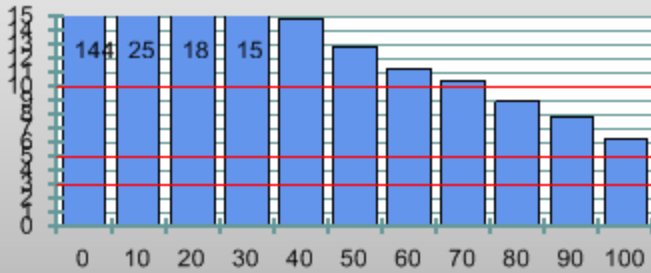
Correlated Color Temperature



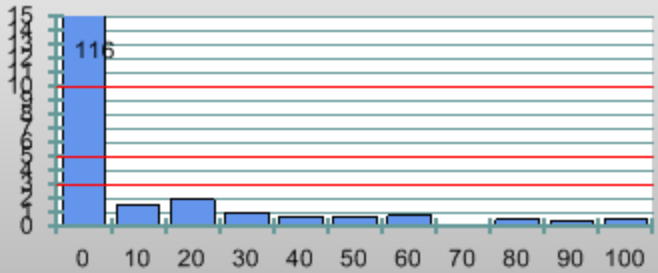
Correlated Color Temperature



DeltaE uv



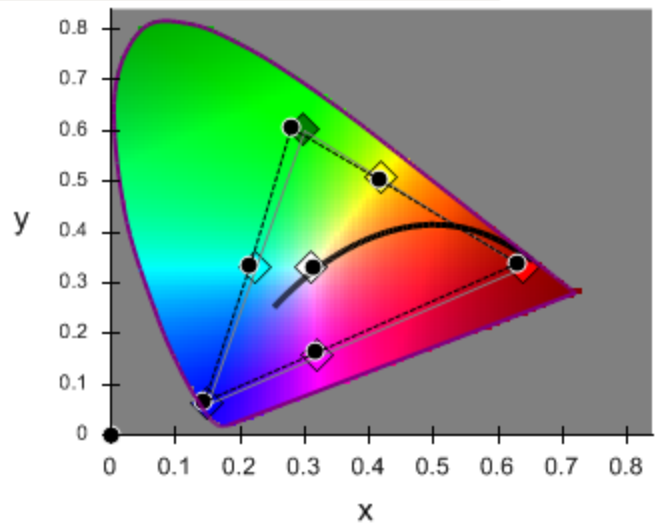
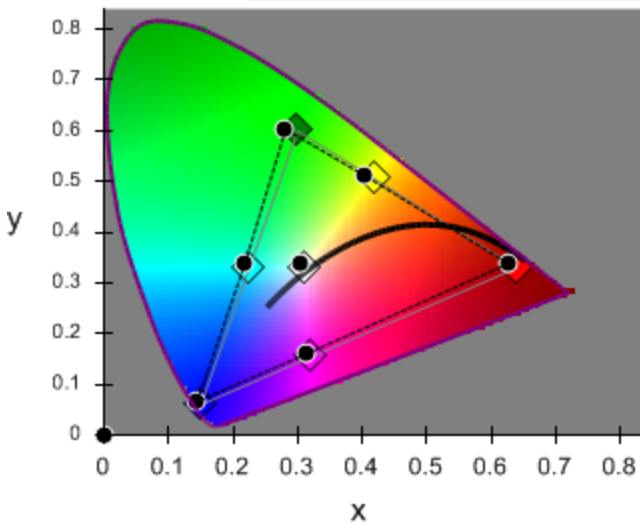
DeltaE uv



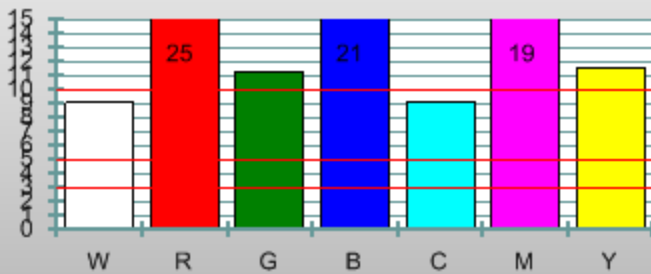
Pre-Calibration

2D Color

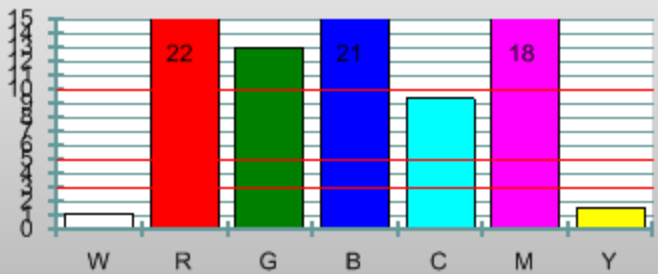
Post-Calibration



DeltaE uv



DeltaE uv



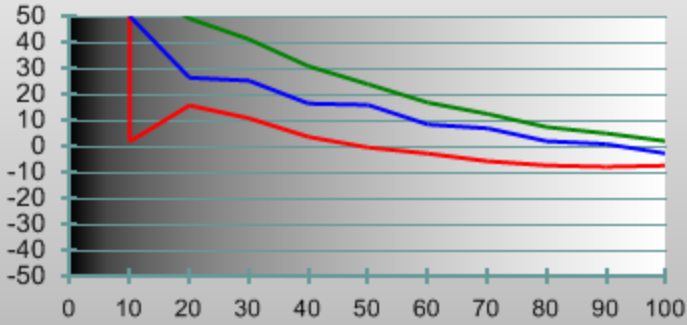


Pre-Calibration

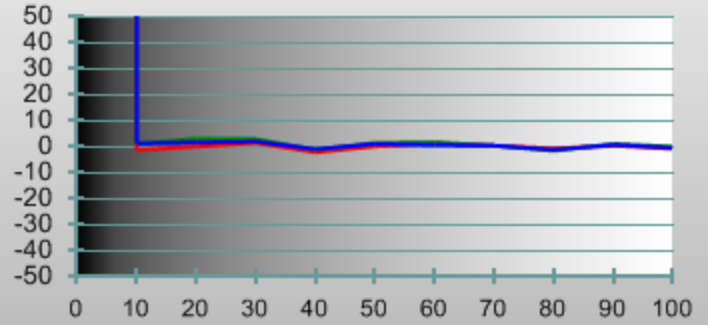
3D Grayscale/Gamma

Post-Calibration

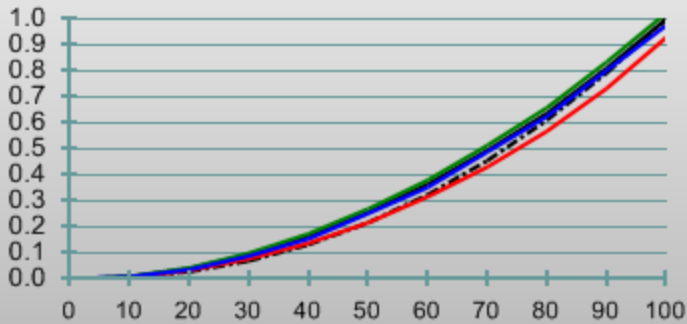
Absolute RGB Level Tracking



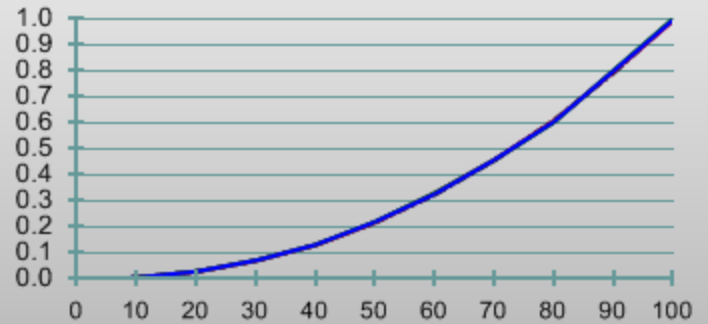
Absolute RGB Level Tracking



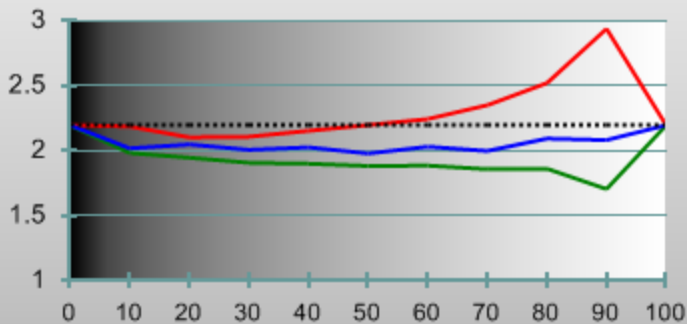
Luminance RGB



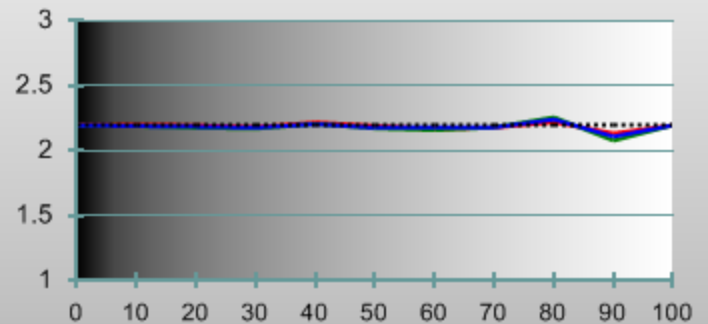
Luminance RGB



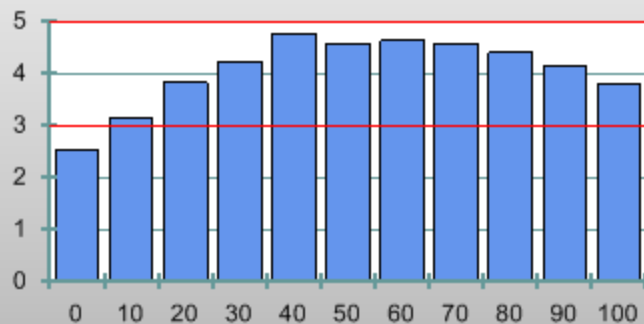
Gamma RGB



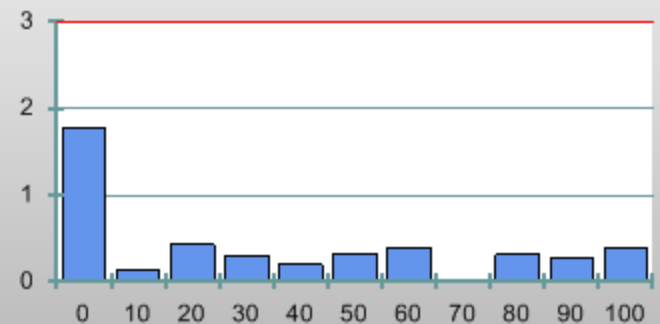
Gamma RGB



DeltaE 1994



DeltaE 1994



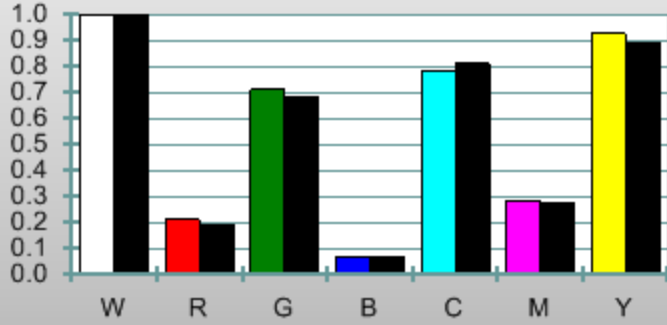


Pre-Calibration

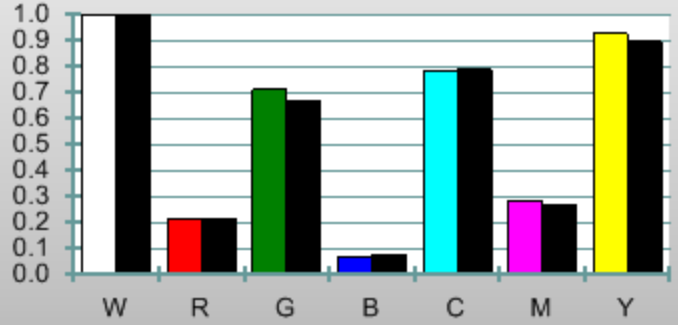
3D Color Gamut

Post-Calibration

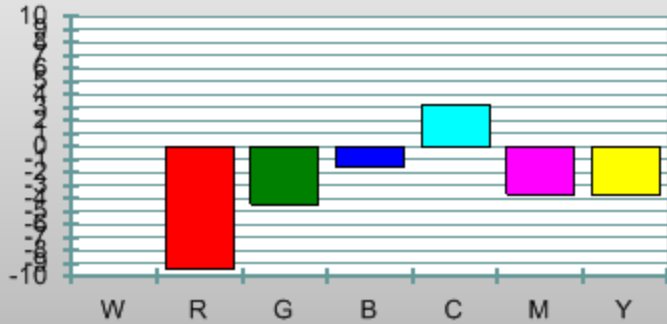
Luminance



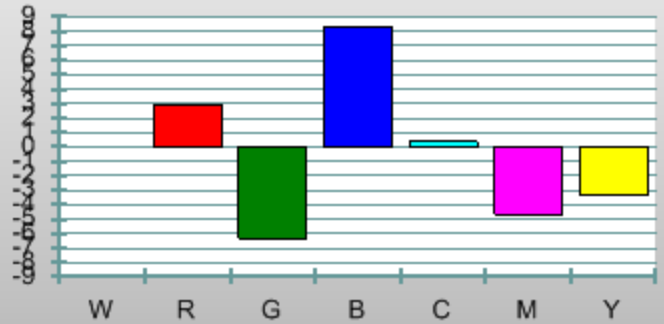
Luminance



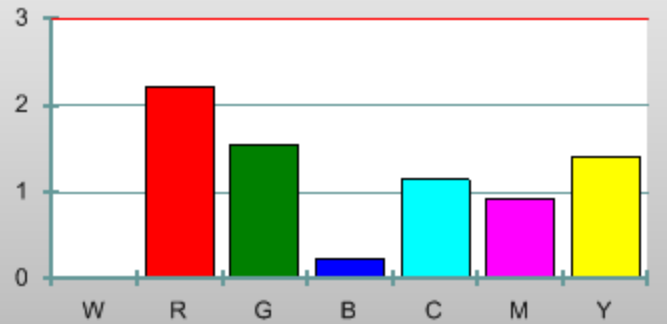
Absolute Luminance



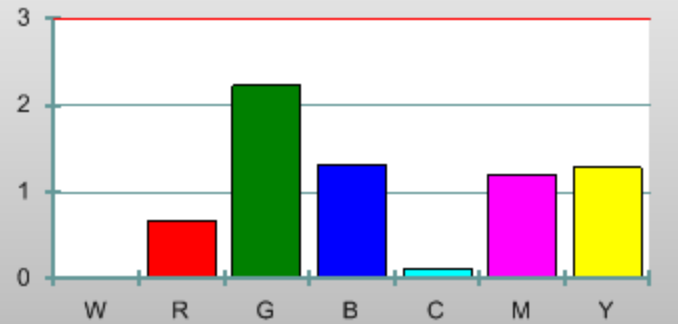
Absolute Luminance



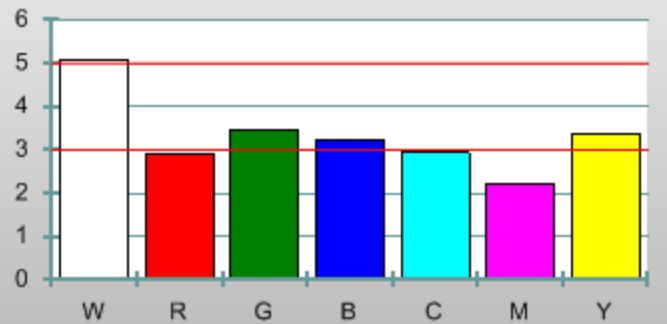
Delta Luminance



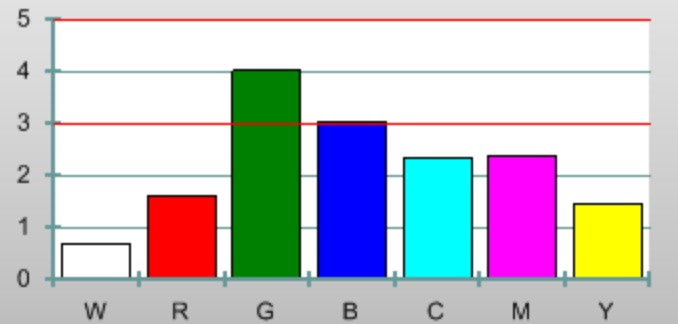
Delta Luminance



DeltaE 1994



DeltaE 1994





**Pre-Calibration**

**Calibration Notes**

**Post-Calibration**

Display's as-found Pre-Calibration settings:

Picture Mode:  
Color Temp :  
Gamma :  
Back Light : 0  
Brightness : 0  
Contrast : 0  
Color : 0  
Tint : 0  
Sharpness : 0

High White Balance  
Red : 0  
Green : 0  
Blue : 0

Low White Balance  
Red : 0  
Green : 0  
Blue : 0

Display's as-left Post-Calibration settings:

Picture Mode:  
Color Temp :  
Gamma :  
Back Light : 0  
Brightness : 0  
Contrast : 0  
Color : 0  
Tint : 0  
Sharpness : 0

High White Balance  
Red : 0  
Green : 0  
Blue : 0

Low White Balance  
Red : 0  
Green : 0  
Blue : 0



**Pre-Calibration Data**

fL	75%W	Red	Green	Blue	Cyan	Magenta	Yellow
x	0.3066	0.6268	0.2815	0.1442	0.2176	0.3144	0.4055
y	0.3354	0.3384	0.6031	0.0662	0.3360	0.1608	0.5106
Y	26.7339	5.1541	18.2768	1.9013	21.7307	7.3387	23.8911
T <sub>x</sub>	0.3127	0.6399	0.3000	0.1500	0.2246	0.3209	0.4193
T <sub>y</sub>	0.3290	0.3300	0.6000	0.0599	0.3287	0.1541	0.5052
T <sub>Y</sub>	26.7339	5.6849	19.1192	1.9296	21.0489	7.6146	24.8042
L	100	51.0125	86.1890	32.0605	92.2585	59.3896	95.7334
u'	0.1912	0.4317	0.1164	0.1646	0.1319	0.2924	0.1950
v'	0.4708	0.5244	0.5610	0.1699	0.4584	0.3365	0.5526
T <sub>L</sub>	100	53.2382	87.7355	32.2984	91.1142	60.3226	97.1389
T <sub>u'</sub>	0.1978	0.4507	0.125	0.1754	0.1383	0.3050	0.2039
T <sub>v'</sub>	0.4683	0.5228	0.5625	0.1578	0.4554	0.3297	0.5528
dE 76	9.1135	20.0293	8.9878	7.4686	9.2714	13.0514	11.4162
dE 94	5.0896	2.9219	3.4620	3.2226	2.9477	2.2152	3.3824
dE 00	8.0159	560.7287	336.6488	317.5149	392.6916	294.4945	3630.7233
CCT	6778	2608	6395	1977	12.996	2342	4150
Gamma	2.2000	2.2000	2.2000	2.2000	2.2000	2.2000	2.2000

fL	0	10	20	30	40	50	60	70	80	90	100
x	0.2090	0.2892	0.3062	0.3043	0.3046	0.3025	0.3052	0.3042	0.3061	0.3065	0.3092
y	0.2009	0.3384	0.3471	0.3421	0.3417	0.3362	0.3371	0.3344	0.3346	0.3333	0.3341
Y	0.0505	0.4446	1.9238	4.4660	7.8077	12.1557	17.2245	23.3495	30.0709	38.2422	47.1412
T <sub>x</sub>	0.3127	0.3127	0.3127	0.3127	0.3127	0.3127	0.3127	0.3127	0.3127	0.3127	0.3127
T <sub>y</sub>	0.3290	0.3290	0.3290	0.3290	0.3290	0.3290	0.3290	0.3290	0.3290	0.3290	0.3290
T <sub>Y</sub>	0.0000	0.2974	1.3666	3.3347	6.2796	10.2597	15.3226	21.5088	28.8535	37.3881	47.1412
L	0.9692	8.5087	23.9373	36.8810	47.7038	57.8332	66.9290	75.7805	83.8558	92.1863	100
u'	0.1674	0.1784	0.1869	0.1873	0.1877	0.1882	0.1897	0.1899	0.1912	0.1919	0.1935
v'	0.3621	0.4698	0.4767	0.4739	0.4737	0.4706	0.4715	0.4699	0.4703	0.4696	0.4705
T <sub>L</sub>	0.0000	5.6994	19.6352	31.9748	43.2427	53.7754	63.7570	73.3024	82.4896	91.3748	100
T <sub>u'</sub>	0.1978	0.1978	0.1978	0.1978	0.1978	0.1978	0.1978	0.1978	0.1978	0.1978	0.1978
T <sub>v'</sub>	0.4683	0.4683	0.4683	0.4683	0.4683	0.4683	0.4683	0.4683	0.4683	0.4683	0.4683
dE 76	1.3917	2.1498	4.2755	5.6989	7.1096	7.4400	7.5711	7.9030	7.4993	7.2198	6.2716
dE 94	2.5370	3.1429	3.8411	4.2322	4.7714	4.5945	4.6464	4.5849	4.4042	4.1657	3.8201
dE 00	2.7205	4.8852	5.7549	6.5193	7.3963	7.2489	7.2754	7.2410	6.9137	6.5418	5.8670
CCT	535.997	7722	6698	6842	6826	6993	6839	6921	6814	6807	6653
Gamma	2.2000	2.0254	1.9875	1.9573	1.9622	1.9553	1.9709	1.9697	2.0147	1.9856	2.2000



**Post-Calibration Data**

fL	75%W	Red	Green	Blue	Cyan	Magenta	Yellow
x	0.3139	0.6302	0.2792	0.1448	0.2153	0.3183	0.4166
y	0.3289	0.3389	0.6059	0.0662	0.3331	0.1629	0.5032
Y	23.8816	5.2271	15.9977	1.8681	18.8692	6.4864	21.4116
Tx	0.3127	0.6399	0.3000	0.1500	0.2246	0.3209	0.4193
Ty	0.3290	0.3300	0.6000	0.0599	0.3287	0.1541	0.5052
TY	23.8816	5.0784	17.0794	1.7238	18.8032	6.8022	22.1578
L	100	53.9074	85.4977	33.6104	91.2396	59.1229	95.8544
u'	0.1987	0.4341	0.1150	0.1652	0.1311	0.2949	0.2031
v'	0.4684	0.5253	0.5614	0.1700	0.4565	0.3395	0.5519
TL	100	53.2382	87.7355	32.2984	91.1142	60.3226	97.1389
Tu'	0.1978	0.4507	0.125	0.1754	0.1383	0.3050	0.2039
Tv'	0.4683	0.5228	0.5625	0.1578	0.4554	0.3297	0.5528
dE 76	1.1746	9.7099	10.0259	4.9973	8.6587	13.5761	3.1037
dE 94	0.6997	1.6342	4.0304	3.0359	2.3456	2.3805	1.4597
dE 00	1.0312	360.8773	300.3042	334.7174	519.4421	0	141.5839
CCT	6435	2642	6431	1972	13,397	2637	3943
Gamma	2.2000	2.2000	2.2000	2.2000	2.2000	2.2000	2.2000

fL	0	10	20	30	40	50	60	70	80	90	100
x	0.2435	0.3109	0.3116	0.3123	0.3118	0.3120	0.3131	0.3127	0.3130	0.3125	0.3124
y	0.2139	0.3287	0.3305	0.3299	0.3287	0.3293	0.3300	0.3290	0.3286	0.3293	0.3295
Y	0.0394	0.2851	1.3331	3.2581	5.9019	9.8896	14.8275	20.5788	27.1272	35.9517	44.8356
Tx	0.3127	0.3127	0.3127	0.3127	0.3127	0.3127	0.3127	0.3127	0.3127	0.3127	0.3127
Ty	0.3290	0.3290	0.3290	0.3290	0.3290	0.3290	0.3290	0.3290	0.3290	0.3290	0.3290
TY	0.0000	0.2828	1.2998	3.1716	5.9724	9.7579	14.5732	20.4568	27.4423	35.5595	44.8356
L	0.7950	5.7443	19.9370	32.4066	43.0086	54.0879	64.2183	73.4796	82.1113	91.7681	100
u'	0.1917	0.1967	0.1964	0.1972	0.1973	0.1972	0.1977	0.1978	0.1982	0.1975	0.1974
v'	0.3790	0.4679	0.4689	0.4687	0.4680	0.4684	0.4689	0.4683	0.4681	0.4684	0.4685
TL	0.0000	5.6994	19.6352	31.9748	43.2427	53.7754	63.7570	73.3024	82.4896	91.3748	100
Tu'	0.1978	0.1978	0.1978	0.1978	0.1978	0.1978	0.1978	0.1978	0.1978	0.1978	0.1978
Tv'	0.4683	0.4683	0.4683	0.4683	0.4683	0.4683	0.4683	0.4683	0.4683	0.4683	0.4683
dE 76	0.9249	0.0875	0.3850	0.3240	0.3045	0.4220	0.5355	0.0152	0.4399	0.3719	0.5457
dE 94	1.7861	0.1330	0.4288	0.3077	0.2032	0.3176	0.4002	0.0115	0.3220	0.2750	0.3999
dE 00	1.9909	0.1883	0.6333	0.4423	0.2723	0.4780	0.4751	0.0170	0.4782	0.4010	0.5775
CCT	75.960	6599	6552	6517	6550	6537	6474	6503	6487	6511	6512
Gamma	2.2000	2.1965	2.1842	2.1776	2.2129	2.1806	2.1661	2.1833	2.2517	2.0958	2.2000